







Mandatory Safety

- Never use the product for the proposes other than listed on this manual.
- Read the instruction manual before using this product.
- Remove all the packaging before use.
- If the unit will not be used for an extended period, follow the cleaning and maintenance instruction to clean the unit before storage.
- “WARNING” contains important safety instructions. Be sure to follow these instructions.

Warning

- 
- This device is not intended for use by persons with reduced physical or cognitive capacities without the necessary experience or knowledge, unless they have been trained to use the device correctly by a person responsible for their safety and have understood the risks involved.
- 
- Stop using the device immediately if you notice smoke, unusual smells, sounds or other functional abnormalities.
- 
- Do not modify, fix or dismantle this product, as fire, electric shock or damage may occur.
- 
- When the product is at the end of its life, we recommend disposal at a collection point for the recycling of electrical and electronic equipment, rather than with household waste.
- 
- Please avoid dripping the essential oil onto the exterior of the product or onto furniture. If essential oil dripping accidentally occurs, wipe off immediately to avoid discoloration of the exterior of the product or the furniture.
 - This product is not medical equipment. Directly inhaling the negative ion is not recommended.
 - Not recommend for use in a high humidity environment as it might affect the function of the HEPA filter.
 - To maintain the battery, please charge every 3 months.
 - Keep the product away from the heat sources, high-pressure places and do not break or damage the product.
 - Make sure to use the device in below temperature range, otherwise it might hurt the battery life.
Charging: 15°- 45°C Working: 0° - 60°C
- 

- If you have any special physical conditions, such as pregnancy, lung failure, cancer, epilepsy, or other illnesses, please consult your doctor before using essential oils. Stop using the product and open the windows for ventilation if you start to feel uncomfortable.
 - If you experience any skin/eye discomfort, stop using the product immediately. Consult a physician if necessary.
 - Essential oils are highly concentrated and should always be handled with care. Never exceed the recommended dosage.
 - This machine contains a battery that is non replaceable. Do not take the product apart.
 - Do not allow water to enter or immerse to the device.
 - Please keep this product away from heat sources.
 - Do not allow to run if the device is being blocked or covered.
 - Do not touch the negative ion dispenser during operation.
 - The product is not a medical device. We will not be liable for any accidents related to health and safety management.
 - This product is not intended for use by persons (including children) with reduced physical, sensory or mental capabilities, or lack of experience and knowledge, unless they have been given supervision or instruction concerning use of the product by a person responsible for their safety.
 - Do not let children use this product. Keep out of reach of children as electric shock and injury may occur. Children should be properly supervised to ensure that they will not play with this product.
 - To avoid fire, electric shock, injury or damage, do not place the product in the areas listed below :
 - Environments exposed to direct sunlight to high temperatures and keep away from sources of ignition.
 - Pressurized objects and combustibles.

Product Dimensions

Product Name:	Portable Air Purifier	Main Unit Weight:	90g
Model Code:	APDOSNNA	Negative ion content:	19 million/cm³
Product Size:	Ø85mm(D) x 29.3mm(H)	Material:	PP + PU + Lava Rock
Power:	5V \Rightarrow 0.6A	Made in China	
Lithium Battery:	3.7V \Rightarrow 600mAh 222Wh		

Product Warranty

Thank you for your purchase, this product carries a 12 month warranty on manufacturing defects. Please contact The White Company Customer Services team for assistance on 0203 758 9222.

Proof of purchase will be required. Warranty does NOT cover:

- Damage of accessories due to wear and tear/excessive use.
 - Damage due to abuse/improper use of the product
 - Damage due to non household use
 - Failure to provide proof of purchase

The White Company reserve the right to repair or replace any faulty product throughout the warranty period.


Product name : _____


Model no. : _____


Batch no : _____


Point of purchase: _____


Date of purchase: _____



Ozone Free



JAIRA Grade 5



PM2.5 99.9%



Pollen Dust 99.9%


Smoke Dust 99.9%









The White Company, London, W12 7FR / Dublin 2, DO2 Y757

Troubleshooting

If you encounter any problems while using this product, please consult the troubleshooting guidelines listed below.

Symptom	Possible Cause	Solution
Product does not turn on	No more battery power	Charge the battery until the red light disappears.
	Not turning on intermittently	If the battery is completely flat, please connect to power source for a few minutes to allow the appliance to start charging.
	Using an adaptor with less than 1A output	Switch to an adaptor with power output greater than 1A
The purifier is on but there is no fragrance	Not enough oil applied to the filter	Add 3-5 drops of oil to the filter
	The filter has a mix of several different oils	We recommend using one filter per fragrance oil
	The filter has not been changed for a prolonged period of time	We recommend replacing the filter every 3 months

- Do not attempt to dismantle or repair the product by yourself. If the unit still does not operate satisfactorily, please contact The White Company Customer Service team.

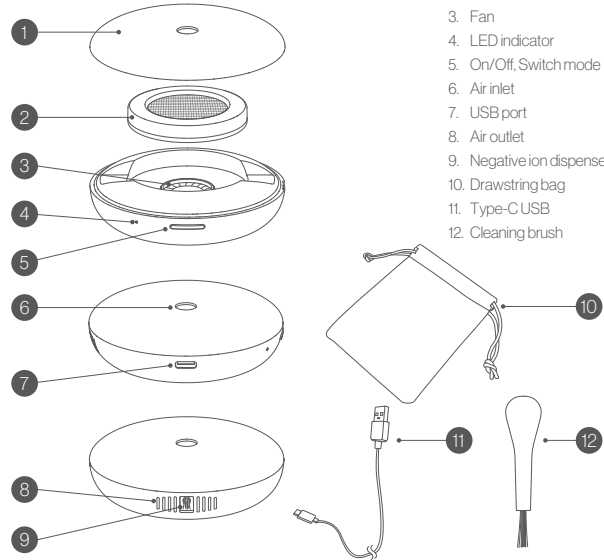
THE WHITE COMPANY
LONDON

USER'S MANUAL Portable Air Purifier

Thank you for purchasing this product.
Please read the user manual carefully before use.

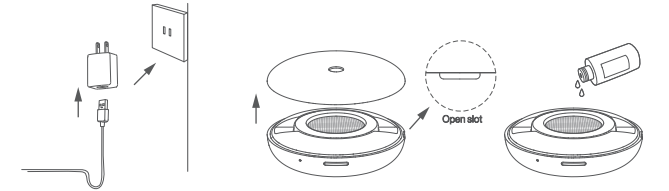
Overview

Main body

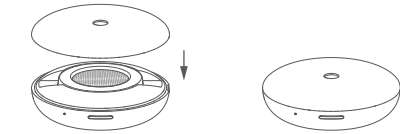


Operation Instructions

Make sure the machine is fully charged before you use it for the first time.



- 1. Plug the Type-C USB to charge the battery. Charging time: 3hrs Working time: Low - Up to 11hrs High - Up to 8hrs
- 2. Remove the Top Cover.
- 3. Add 3-5 drops of your favorite essential oil directly to the HEPA filter.



- 4. Replace the top cover. Make sure the cover aligned with the magnet.
- 5. Long press 2sec the power button to start the device.

Setting Instructions

Power button

- Long press the button in 2sec to ON/OFF the unit.
- Short press the button to switch the mode. The default setting is Low Output – 2mins ON/ 1min off intervals, indicated by the blue LED light.
- Short press to switch the setting in High Output – run continuously, indicated by the green LED light.

LED Indicator:

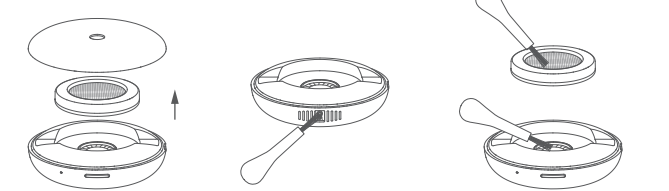
Blue(Keep On) – Low Output	Green(Keep On) – High Output
Blue(Breathing) – Low Output + Charging	Green(Breathing) – High Output + Charging
Blue(Flashing) – Low Battery	Green(Flashing) – Low Battery
Red(Breathing) – Charging	No Light – Off / Fully Charged

Note :

- For best results we recommend using TWC fragrance oils and 100% pure essential oils with this diffuser.
- Do not block the negative ion dispenser, air inlet and air outlet while in use.
- Regular cleaning of the appliance ensures optimal results and a longer life of the appliance.
- To keep a healthy battery life, fully charge it before the first-time use.
- Negative ions maybe affect by the environment such as temperature, humidity and air flow.
- We recommend using one filter per fragrance oil.

Clean & maintenance

Always turn off the device before cleaning.



- 1. Remove the cover.
- 2. Use cleaning brush to clean the negative ion dispenser.
- 3. Use cleaning brush to clean the fan and HEPA filter.

Note :

- Do not use rubbing alcohol or water to clean the device as it might hurt the function of the filter.
- When used for 3-4 hours per day, the HEPA filter will last for 3 months.

