









## Mandatory Safety

- Never use this product for any purpose other than those listed in this manual.
- Read the instruction manual before using this product.
- Remove all packaging before use.
- Use only the power plug contained in the package to avoid damage to the product.
- When unplugging, take care to hold the adaptor plug itself rather than just pulling the cord.
- If the unit will not be used for an extended period or needs to be relocated, unplug the AC adaptor, dispose of the water and clean the unit before storage.
- Avoid moving the unit while in use. If you do have to pick the product up lift the product with its base.
- The precautions listed in this manual are to ensure safe and proper use of this product by the user, and to avoid any danger or injury that could occur through improper use.
- "WARNING" contains important safety instructions. Please follow warnings and guidance below.

## Warning

-  • This device is not intended for use by persons with reduced physical or cognitive capacities without the necessary experience or knowledge, unless they have been trained to use the device correctly by a person responsible for their safety and have understood the risks involved.
-  • Stop using the product immediately and unplug the device once smoke, smell, unusual sounds or other anomalies occur.
-  • Do not modify, fix or dismantle this product, as fire, electric shock or damage may occur.
-  • When the product is at the end of its life, we recommend disposal at a collection point for the recycling of electrical and electronic equipment, rather than with household waste.

-  • When this product remains unused for a long period of time, the main unit must be unplugged from the electrical socket and water removed. Otherwise electric shock malfunction may occur.
- This product must be disconnected from the power sources before cleaning and maintenance.
- Please avoid dripping the essential oil onto the exterior of the product or onto surfaces. If essential oil dripping accidentally occurs, wipe off immediately to avoid discoloration of the exterior of the product or the surfaces.
- This product is not medical equipment. Directly inhaling the aroma mist from the spout is not recommended.
- If you have any special physical conditions, such as pregnancy, lung failure, cancer, epilepsy, or other illnesses, please consult your doctor before using essential oils. Stop using the product and open the windows for ventilation if you start to feel uncomfortable.
- Essential oils are highly concentrated and should always be handled with care, including the amount for each use. Do not add more than 2-3 drops of oil at a time.

-  • Do not handle the main unit and outlet with wet hands, or let water or other liquids spill onto them, as this may result in electric shock.
- This product is not intended for use by persons (including children) with reduced physical, sensory or mental capabilities, or lack of experience and knowledge, unless they have been given supervision or instruction concerning use of the product by a person responsible for their safety.
- Do not let children use this product. Keep out of reach of children as electric shock and injury may occur. Children should be properly supervised to ensure that they will not play with this product.
- To avoid fire, electric shock, injury or damage, do not place the product in the areas listed below :
  - Environments exposed to direct sunlight to high temperatures and keep away from sources of ignition.
  - Pressurized objects and combustibles.

## Product Dimensions

Product name:	Rechargeable Portable Diffuser	Main unit weight:	315g ± 5 %
Model code:	EDDRCNNA	Water tank capacity:	45ml
Product size:	Ø70mm(D) x 172mm(H)	Coverage area:	Up to 20m <sup>2</sup>
Water:	Room-temperature tap water/mineral water	Environment:	Indoor
Material:	Metal + PP + ABS	Run time:	30min/4h/8h
Power input:	DC5V / 2.5W	Made in China	

## Product Warranty

Thank you for your purchase. The products carries a limited 12-month warranty on manufacturer defects. Please contact The White Company Customer Services Team on 0203 758 9222 for any enquiries or product information.

Proof of purchase will be required. Warranty does NOT cover:

- Damage of accessories due to often use /depreciation
- Damage due to abuse or improper use of the product
- Damage of non-household use (i.e natural disaster, commercial use)
- Failure to provide any proof of product damage & purchase

The White Company reserves the right for final decision of replacement or repair for any manufacturing defects.

Product name : \_\_\_\_\_ Model no. : \_\_\_\_\_  
 Batch no : \_\_\_\_\_ Point of purchase: \_\_\_\_\_  
 Date of purchase: \_\_\_\_\_

The White Company, London, W12 7FR / Dublin 2, DO2 Y757



## Troubleshooting

If you experience issues using this device, please follow our troubleshooting guidelines below.

Symptom	Possible Cause	Solution
Diffuser does not turn on/diffuser shuts off before set time is over.	No water in the water tank	Add water to water tank until it reaches the RED Maximum water marker.
	Power cord not connected correctly	Disconnect power cord and re-connect carefully.
	No battery (candle light flashes three times)	Charge it from a power adapter or a USB port.
No mist or abnormal mist	Normal LED light but no mist.	1. Check the water level. The water level should not be higher than the red water marker. 2. Ensure that tap water or mineral water is added. 3. Defective mist chip, please contact customer services
	No mist when covered with lid.	1. Avoid placing the product on soft or uneven surfaces. This will block the air inlet at the bottom. 2. Determine if the fan is working. If it is not working, please contact customer services.
	Oil residue has developed on misting chip. Air inlet at the bottom of the diffuser is blocked?	Gently clean the misting chip with a moist cotton bud until residue has been removed. Clean the air inlet. A partially blocked inlet may interfere with the level of mist output.
Water Leak	Temperature and humidity levels can cause the mist to quickly condense into droplets.	Adjust room temperature and humidity levels to compensate.

- Do not attempt to dismantle or repair the product by yourself. If the unit still does not operate satisfactorily, please contact The White Company Customer Service team.



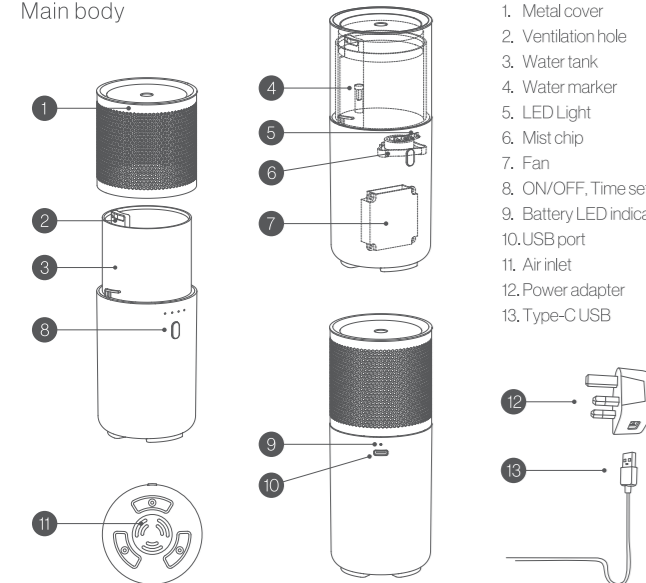
### USER'S MANUAL

#### Rechargeable Portable Diffuser

Thank you for purchasing this product.  
Please read the user manual carefully before use.

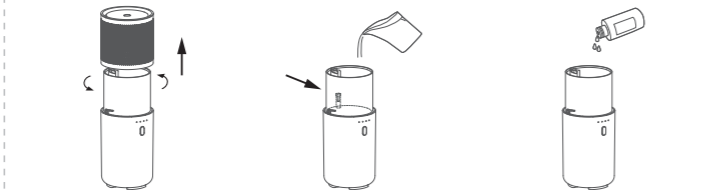
## Overview

### Main body

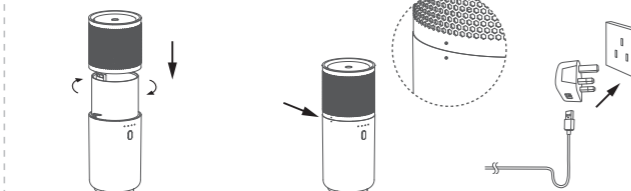


## Operating Instructions

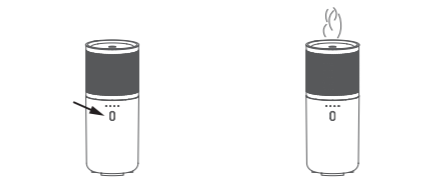
- Always place your diffuser on a firm, flat and level surface.



2. Pour water to the water tank until it reaches the RED maximum water marker.
3. Add 2-3 drops of your favourite TWC fragrance oil into the water tank.



5. Make sure to align the lock sign.
6. Recharge the diffuser in power adapter socket/USB port or operate continuously when plugged in USB power.



8. Diffuser will begin diffusing.

### Caution:

1. Be sure to hold the whole product carefully when moving the product. Handle the product with care to avoid impacts or drops.
2. The unit should be placed on a level solid surface. Do not place on carpets, rugs, wooden/ polished furniture or unstable surfaces.
3. Use a suitable measuring cup to fill the water into the water tank. Never attempt to fill water under a running tap or whilst plugged in.
4. The water level should not exceed the water marker to avoid damage to this device.
5. Keep water away from Ventilation Hole and Air Inlet.
6. For best results, we recommend to use TWC fragrance oils with this scent diffuser.
7. Always unplug the product from electrical socket when not in use.
8. Do not remove the cover during operation.

## Rechargeable Function

- To keep the best battery health, charge it before the first time use.
  - The charging time is 4.5hours from 0-100% battery.
  - The battery can run up to 3hours continuously.
  - Once diffuser is charged and not in use, the charging device must be unplugged to avoid electrical misfunction and overheating risk.
- \*You can operate continuously the diffuser when plugged in the USB power\*

## Setting Instructions

### On/Off, Time setting

- Press the button once to turn ON the unit. The default setting is 4 hours continuous mode.
- Press the button a second time and the time working set to be 30mins continuous mode.
- Press the button three times to set the diffuser to 8 hours working time with 5 minute on/off intervals.
- Press the button four times to set the diffuser to 8 hours working time with 30 second on/off intervals
- Press the button a fifth time to switch diffuser OFF.

### LED Light

- Hold the button 2sec to turn off the LED light, Hold another 2sec to turn on the LED light.
- \*The LED light will flash in red for 3times if the water is in low level\*

### Battery LED Indicator

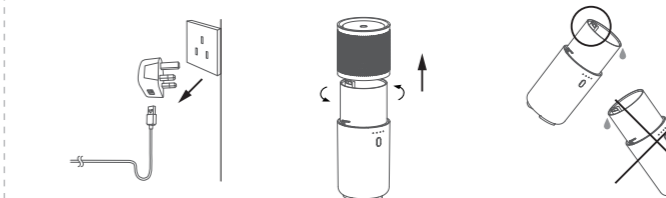
- Charging (Candle light)
- Full Battery (White light)
- Low Battery (Flashing candle light in 3times)

### Note:

1. A slight difference in mist amount produced by different units is expected.
2. Factors affecting the mist amount: water, humidity, temperature, and air flow.
3. Automatic shut off function when the diffuser detects the water is empty or when it is tipped over.

## Cleaning and Maintenance

- Always disconnect the AC adaptor from the device before cleaning.



2. Hold the base and rotate anti-clockwise to take out the outer cover.
3. Make sure the ventilation hole is not subject to spilling. Pour water out from the opposite side (of the ventilation hole).



5. Use cotton swab and neutral detergent, then rinse thoroughly no less than twice a week.

### Caution:

- Never soak or wash this product directly as it may cause mechanical malfunction or danger.
- Never use acidic cleansing agents as it may cause malfunctions to the product.
- Use cotton swab to clean the unit after each use. Rinse with tap or spring water, then wipe with a dry cloth.
- The water tank must be cleaned before the essential oil is changed each time.
- Use tap water or spring water.
- Allow to dry thoroughly after use/ cleaning.
- Take care to ensure no water spills into the air duct outlet as this could damage the electrical circuit.